



Industrial Services Group



**YOUR SPECIALTY,
INDUSTRIAL CONTRACTOR**

#YesWeCan

Total Solutions Contractor

No matter the size of the project, IMI delivers quality and consistency from concept to commission. IMI has the proven skill set to provide everything you require for your project.

IMI's team of professionals will manage your project safely, on schedule, and within the predetermined budget. We utilize our in-house work forces for scheduling, engineering, raw material, finished goods, quality control inspections, documentation, installation, testing, start-up, and turn-over.

- Programming
- Design Development
- Permitting
- Project Management
- Construction Management
- Site Work
- Concrete
- Masonry
- Plumbing
- Electrical
- Low Voltage+
- Conveying Systems
- Specialty Equipment
- Commissioning
- Life Safety
- Metals, Woods, Plastics
- Finishes



Piping and Modular Fabrication

Our TEAM of Certified Welders and Fitters assemble spools and equipment skids in IMI's Pipe Shop utilizing standardized processes to control costs, better guarantee fit, and weld quality. Quality Technicians inspect and verify that all physical dimensions, design tolerances, and finishing criteria.

Services:

- Pipe Surface Preparation
- High Purity Orbital Welding
- Borescope
- Prefabricated Spools
- Prefabricated Pump Skids
- Storage Tank Fabrication
- Sanitary Piping and Tubing
- Process / Utility Pipe Systems
- Grooved Pipe Coupling Systems
- Morris Coupled Vacuum Systems
- Jacketed Systems

Our Expertise:

- Custom Fabrication Sizes
- Carbon Steel
- Stainless Steel
(304, 316, 317, 347)
- Duplex and Inconel®
- Titanium
- Chrome Moly
(P5, P9, P11, P22, P91, P92)
- Aluminum
- Copper
- Polymer Systems

Field Services:

- Installation and Assembly
- Mechanical Hot Taps
- Pipe Freezing
- R-Stamp Repair
- U-Stamp Repair



Field Services and Equipment Installation

IMI's Field Services group handles every aspect of in-house improvements, retooling, plant installations, and relocations. As your Industrial Contractor, IMI provides skilled craftsmen, millwrights, riggers, machinery movers, and electricians to assemble and erect your equipment and machinery.

IMI's rigging fleet includes Broderson cranes, forklifts ranging from 5,000 to 30,000lbs, Versa Lifts up to 120,000lbs, and hauling equipment.



- Assist Plant/Facility Maintenance Crew
- Scheduled Shutdowns
- Preventive Maintenance (PM's)
- Job scheduling with other IMI groups
- Emergency Repairs & Services

Complete Installation of Machinery and Equipment

- Air
- Compressors
- Dryers Tanks
- Process Machinery
- Conveyors
- Packaging Equipment
- Production Line
- Specialty Rigging
- Precision Leveling
- Alignment
- Boilers Chillers
- Cooling Towers
- Pumps
- Control Panels
- Motor Control Centers
- Instrumentation
- Dismantling
- Plant Relocation



Stainless Steel Fabrication

Quality. Precision. Finish. Stainless Fabrication: 303, 304, 316, 317, 347, 440

Customers rely on IMI for their stainless steel fabrication needs, including prototyping, material handling equipment, structures, and specialty fabrication.

Our segregated stainless steel fabrication facility provides a contamination-free environment for producing high purity sanitary stainless projects.

We utilize mechanical and electropolishing to meet customers' specified Ra values to an Ra 5.

IMI's Staff includes:

- On-Staff CWI
- Quality Craftsmen
- Certified Welders
- Orbital Welders
- Engineering/Design Team

We offer:

- Modular Stainless Fabrication
- Sanitary Stainless Pipe Fabrication
- Waterjet and Plasma Cutting
- Mechanical Polishing
- Electropolishing/Passivation

Code compliant processes:

- AISC ASME BPE 31.1, 31.3,
- Section IX ASTM AWS D1.6, D18.1



Civil/Construction Services

As your single-source contractor, IMI Industrial Services Group's TEAM of professionals have the resources to take your project from conception to commissioning. IMI provides a multitude of general contracting services in many markets, including but not limited to the commercial, educational, energy, government, healthcare, hospitality, industrial, and manufacturing sectors.



- General Contracting
- Project Management
- Engineering
- Estimating
- Scheduling
- Permitting
- Commissioning
- Demolition
- Grading
- Utilities
- Erosion Control
- Life Safety Systems
- Low Voltage Systems
- Special Construction

- Interior Finishes
- Drywall
- Acoustical Ceilings
- Doors & Windows
- Accessories
- Painting
- Flooring
- Stone/Ceramic Tile
- Casework
- Plumbing
- Piping
- Mechanical
- Electrical
- Furnishings

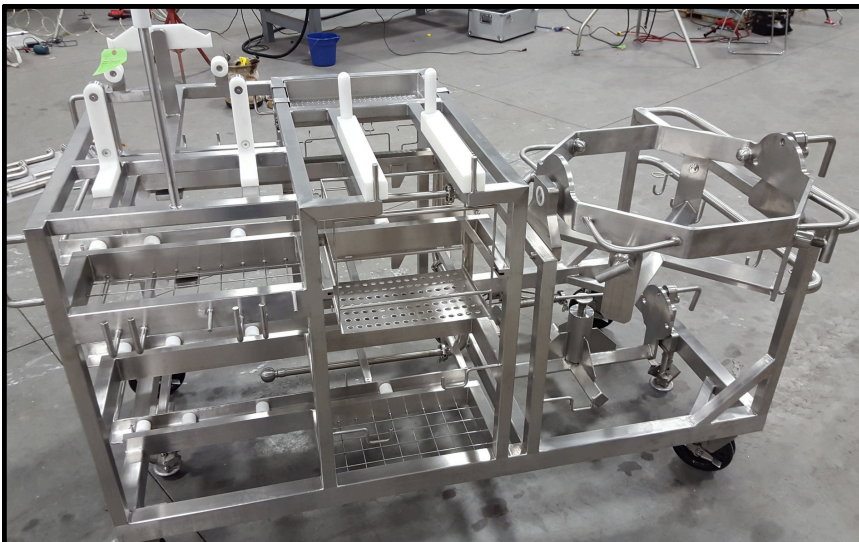
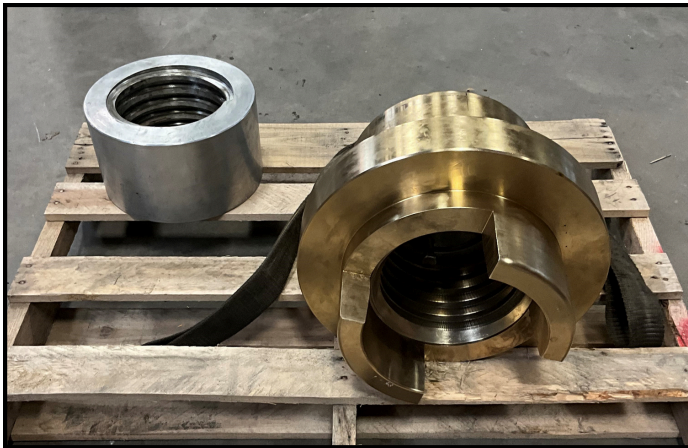
- Concrete Slabs/Foundations
- Curb/Gutter/Sidewalks
- Asphalt Paving/Stripping
- Steel/Stair Erection
- Steel Fabrication
- Metal Framing
- Thermal/Moisture Protection
- Exterior Finishes
- Masonry
- Metals
- HVAC
- Fire Sprinkler
- Specialties
- Equipment

Machining and Fabrication

OEM parts are expensive and involve long lead-times, which can cripple a factory. IMI understands the importance of these parts and has dedicated resources and methods to ensure that you are up and running quickly.

Advantages of IMI as a resource:

- Duplication of: Original, Expensive, & Obsolete Parts
- Design modifications to OEM parts
- Dimensional and assembly prints
- Reduced cost and increased machine uptime
- Elimination of international logistics issues
- 24/7/365



Drums, Mandrels, Rolls, and Shafts

Designing and fabricating rolls is an IMI expertise. If you have a roll problem, we have a solution. IMI's machining and fabrication team utilize stringent steps to ensure our customers receive a product that not only meets their design specifications but has an excellent life span.

Types of rolls:

- Carbon Fiber
- Stainless Ceramic
- Compound Coated
- Cooling Rolls

Large Capacity:

- 38" X 240"
- 66 ½" X 108"
- Tight Tolerance Capability
 - $\pm .003$

Finishes:

- Mechanically Polished Finish (less than 28 RA)
- Knurling



Structural Fabrication

IMI offers customers a turnkey solution for their structural fabrication with its AISC compliant, full service structural fabrication facility. From surface preparation, cutting, drilling, fabrication, surface coatings, and installation. IMI's fabrication team produces quality structural systems from carbon steel, aluminum, and stainless.

Services:

- Engineering and Design
- Drafting and Detailing
- Delivery
- Installation and Assembly

Fabrication:

- Structural Steel Buildings
- Mezzanines and Platforms
- Steel Support
- Catwalks and Stairways
- Handrails and Machine Guards
- Pipe Bridges
- Metal Truss Systems
- Storage and Sump Tanks



Surface Preparation and Specialty Coatings

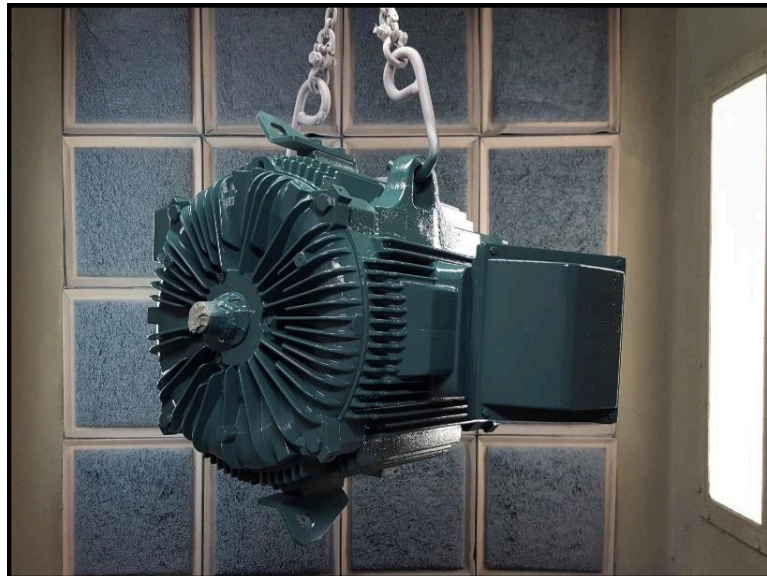
Coatings play a key role in providing protection from corrosion, extreme temperatures, and other aggressive conditions. For finished fabrication, IMI provides documentation for entities with strict requirements.

IMI's **Ocean Structural Shot Blast** system by Agtos removes rust, scale, and paint prior to fabrication. Beam capacity: 24" dia. X 40" A finish specification of SSPC-SP5 (SSI-SA3) is easily met.



IMI utilizes:

- Abrasive Blasting
- Hand Tool Cleaning
- Single Use & Recycled Media
- Garnet
- Power Tool Cleaning
- Solvent Cleaning
- Glass Beads
- Pressure Washing
- Steam Cleaning
- Wheel blasting



Engineering and Design

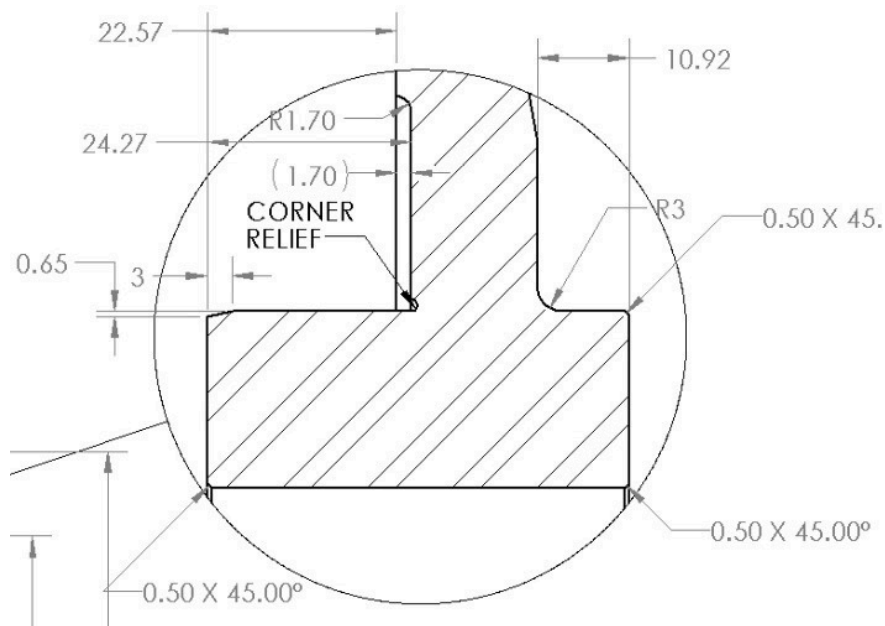
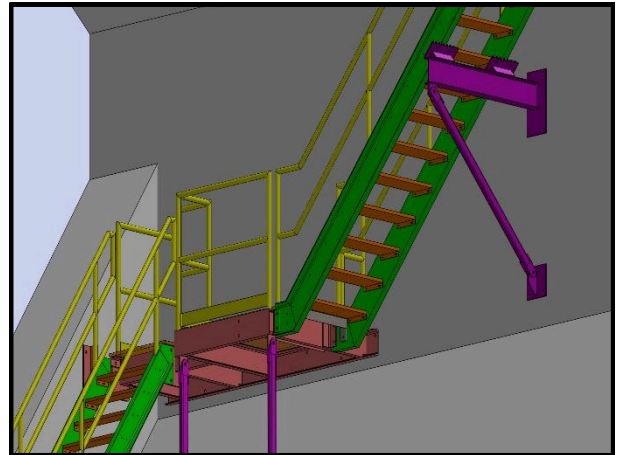
The IMI engineering group compliments the expert trades within IMI by providing turn-key projects. We save our clients time and money, all while adding value and reducing down time. With proven experience across many industries, IMI has earned a solid reputation for design, quality, and value.

Engineering Services:

- Structural Steel Design and Detailing
- Piping System Design and Layout
- Mechanical Design
- Material Handling Systems
- Conveying Systems
- Drying Systems

Advantages:

- Licensed Professional Engineer on staff
- Reversed Engineering of OEM Parts
- Flexible Design Software
- Verify Field Dimensions
- Innovative Solutions
- Operation Reviews





Since 1988, IMI Industrial Services Group has been a proven partner to its customers and a leader in supporting industry by adhering to its core values of ***Safety, Integrity, Quality, and Production.***

Watkinsville || Covington || Augusta
706.769.7962
www.IMIIndustrialServices.com



ecovadis



#YesWeCan